

BLUE PARTS FOR OPTIONAL SHORT INDICATOR

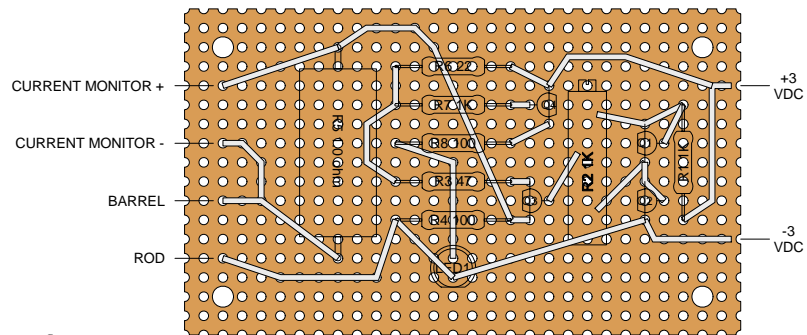
SETUP CALIBRATION ADJUSTMENT

At 200 mV DC Full Scale each mV represents 1 mA during operation

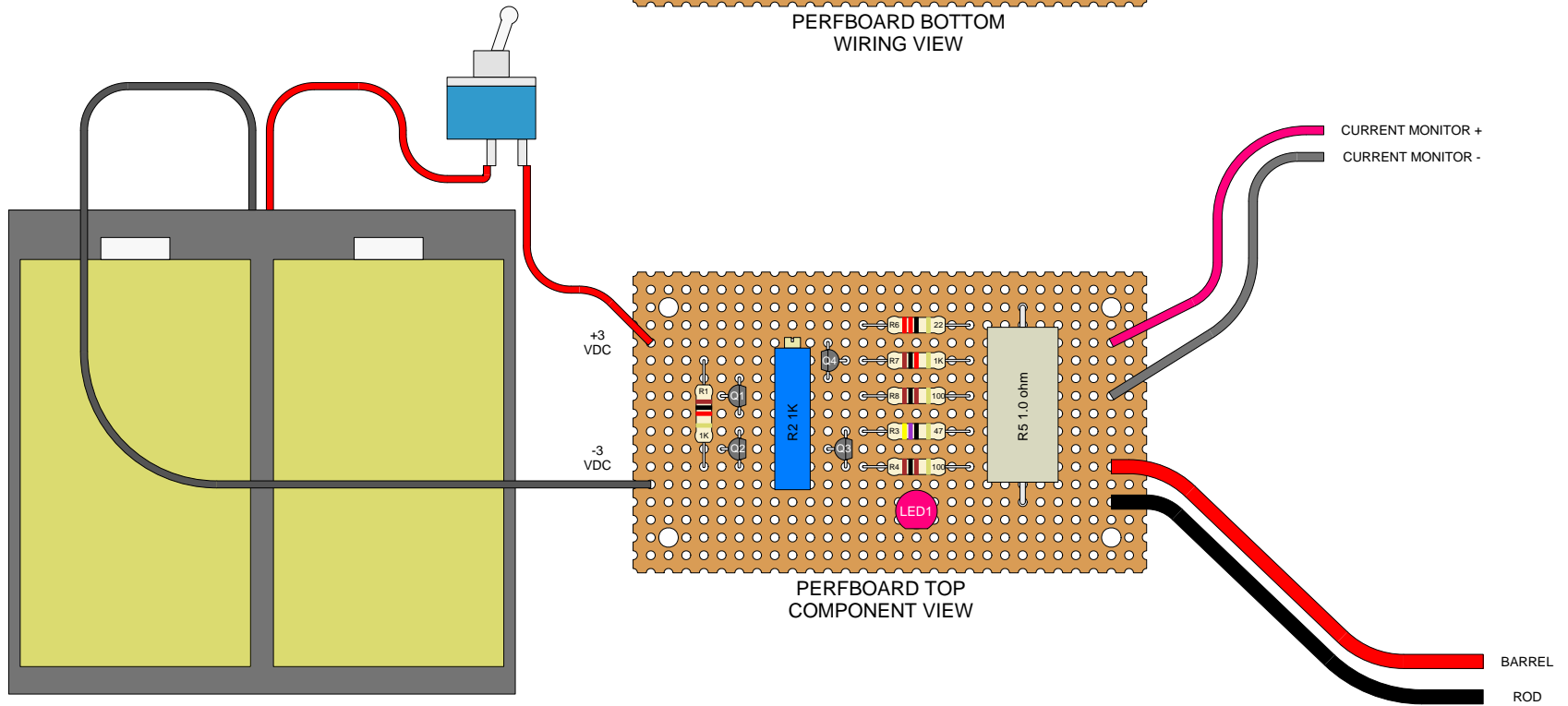
INITIAL SETUP At 2 V DC Full Scale Adust trimpot for 0.300 V before connecting to gun

* This is only available in larger 5W style from Radio Shack. You may also cut 9' 8 1/2" of #30 magnet wire, Tin 1/4" on each end, Hold the two ends together so it bends over in the center, and roll it up from the bend and tie a string around it to keep it together.

300 Mv REGULATOR FOR ELECTROLYTIC CELL

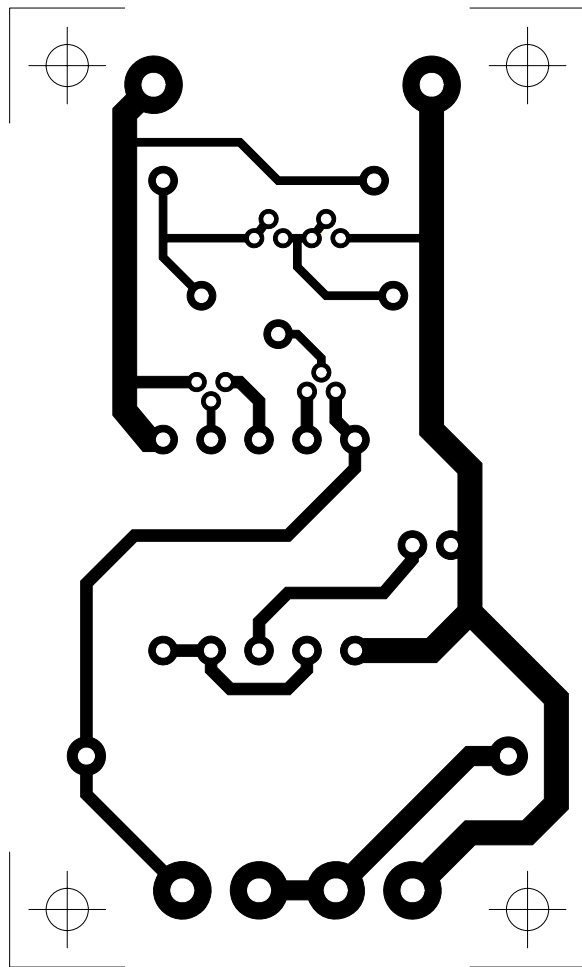


PERFBOARD BOTTOM
WIRING VIEW

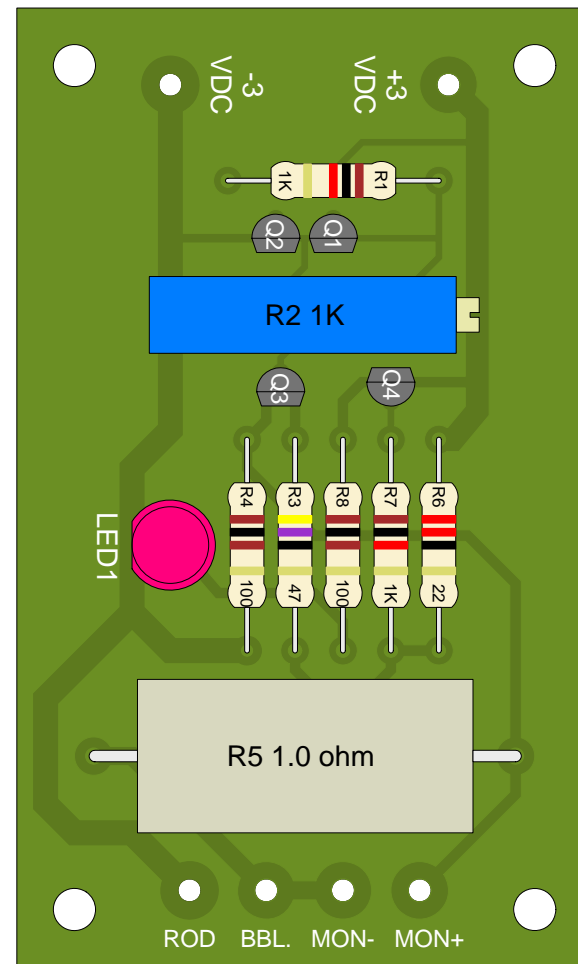


PERFBOARD TOP
COMPONENT VIEW

Perfboard Construction

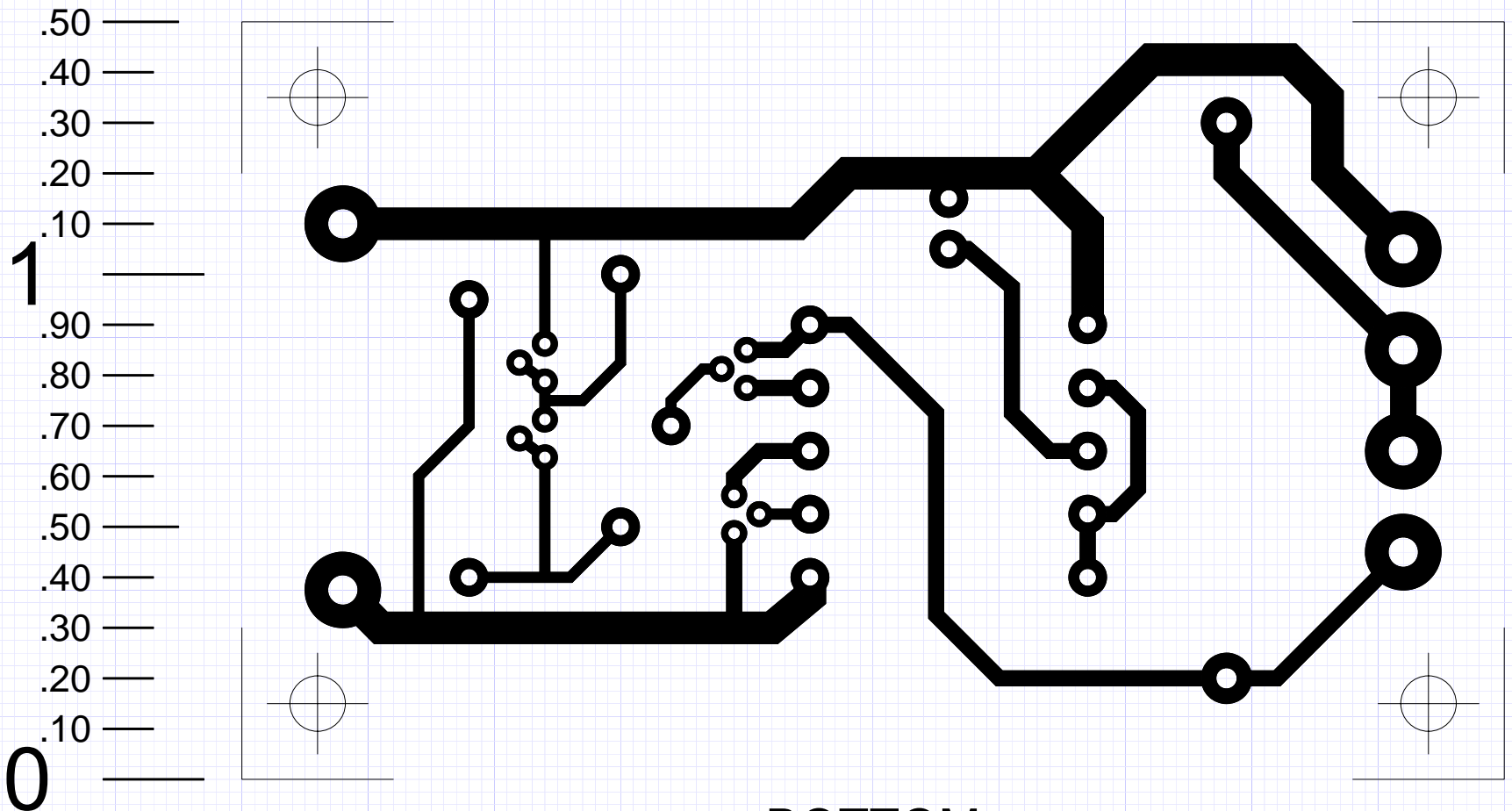
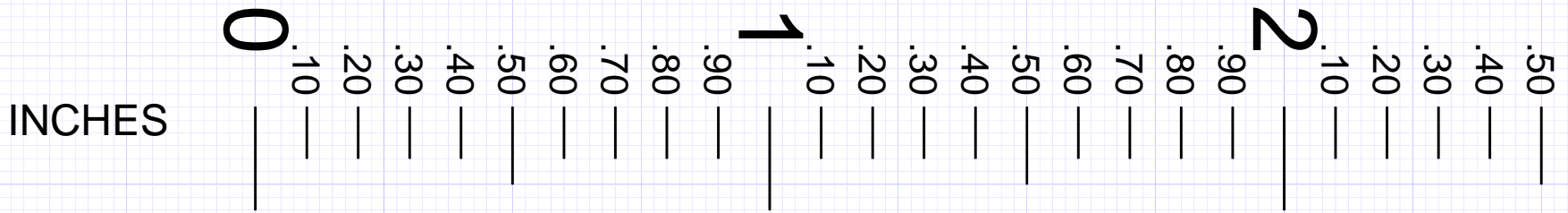


BOTTOM
SINGLE LAYER FOIL PATTERN



TOP
PART PLACEMENT ON BOARD

Circuit Board Construction shown 2:1



BOTTOM
SINGLE LAYER FOIL PATTERN

Circuit Board Construction shown 3:1 with grid